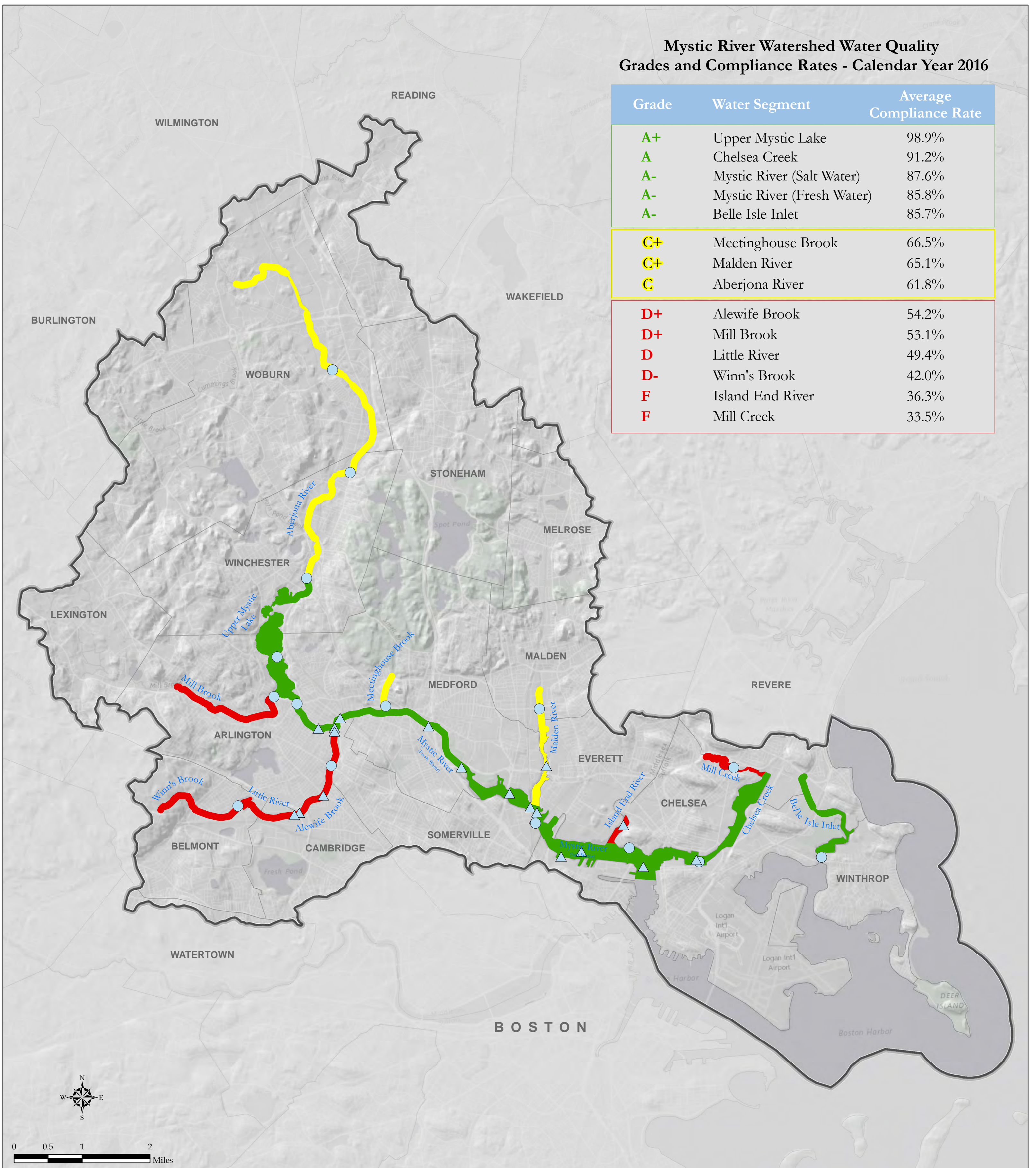


Mystic River Watershed Water Quality Grades and Compliance Rates - Calendar Year 2016

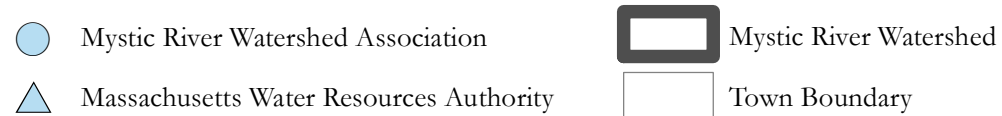
Grade	Water Segment	Average Compliance Rate
A+	Upper Mystic Lake	98.9%
A	Chelsea Creek	91.2%
A-	Mystic River (Salt Water)	87.6%
A-	Mystic River (Fresh Water)	85.8%
A-	Belle Isle Inlet	85.7%
C+	Meetinghouse Brook	66.5%
C+	Malden River	65.1%
C	Aberjona River	61.8%
D+	Alewife Brook	54.2%
D+	Mill Brook	53.1%
D	Little River	49.4%
D-	Winn's Brook	42.0%
F	Island End River	36.3%
F	Mill Creek	33.5%



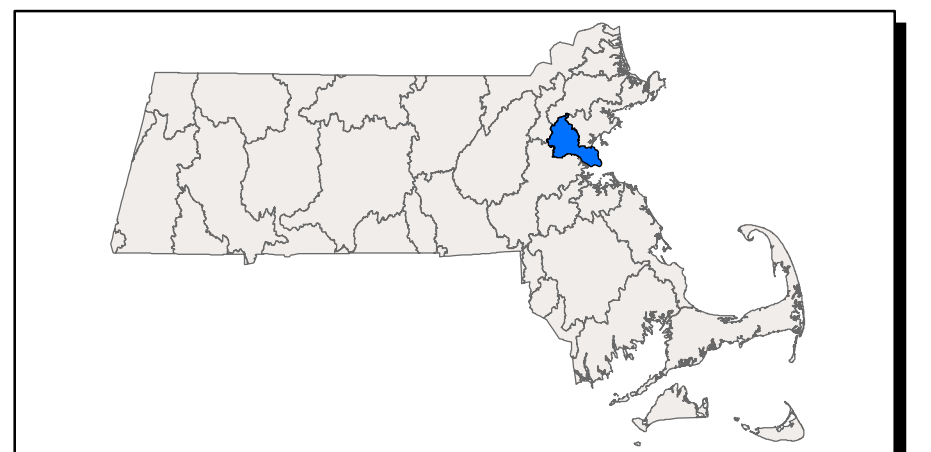
Average Compliance Rates for Swimming and Boating Standards



Monitoring Points



2016 Mystic River Watershed Report Card
(based on 2014-2016 bacterial data)



Data Sources: Mystic River Watershed Association, U.S. EPA, Massachusetts Water Resources Authority, MassGIS.
Basemap: Canvas/World Light Gray Base © ESRI and its data suppliers. EPA Region 1 GIS Center map #11498, 5/24/2017