

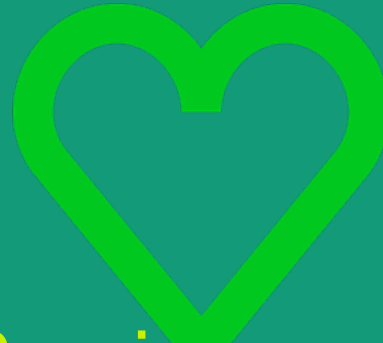
Turning Food Waste into Energy





369,000
Associates

22
Great
Local
BRANDS



Serving more
than

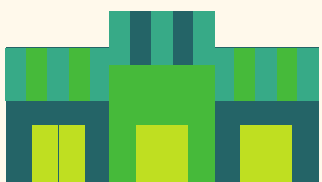
50 million
customers
every week

Proud heritage
150 years
experience
in food
retailing

11 Countries



Shopping
anytime,
anyplace



More than
6,600
stores



Leading
online
businesses



Leading in
sustainable
retailing: Proud
member of **DJSI**



Strong financial
profile



top 10
International
food retailer



Our Brands



GROW GREENER *with us*



over
**2,000,000
TREES
SAVED**

— *last year by* —
RECYCLING CARDBOARD

100%
SUSTAINABLY SOURCED

STOP & SHOP BRAND
**COFFEE, TEA &
SEAFOOD** 

**CONVERTS
INEDIBLE FOOD
INTO ENERGY**

**TO HELP POWER OUR
DISTRIBUTION CENTER**

*Only distributed from MA, RI,
and participating CT stores



ORGANIC WASTE RECYCLED AT STORES FOR
COMPOSTING & ANIMAL FEED



over
2,000,000 MEALS DONATED
TO THOSE IN NEED *instead of wasted*

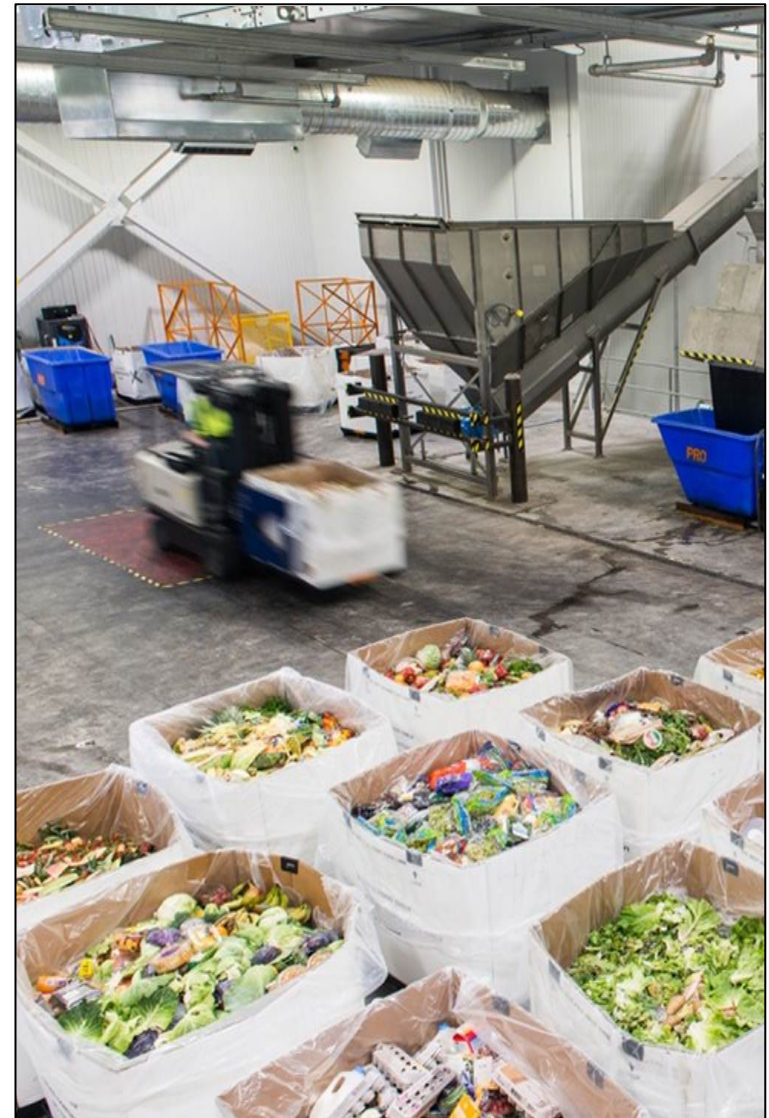
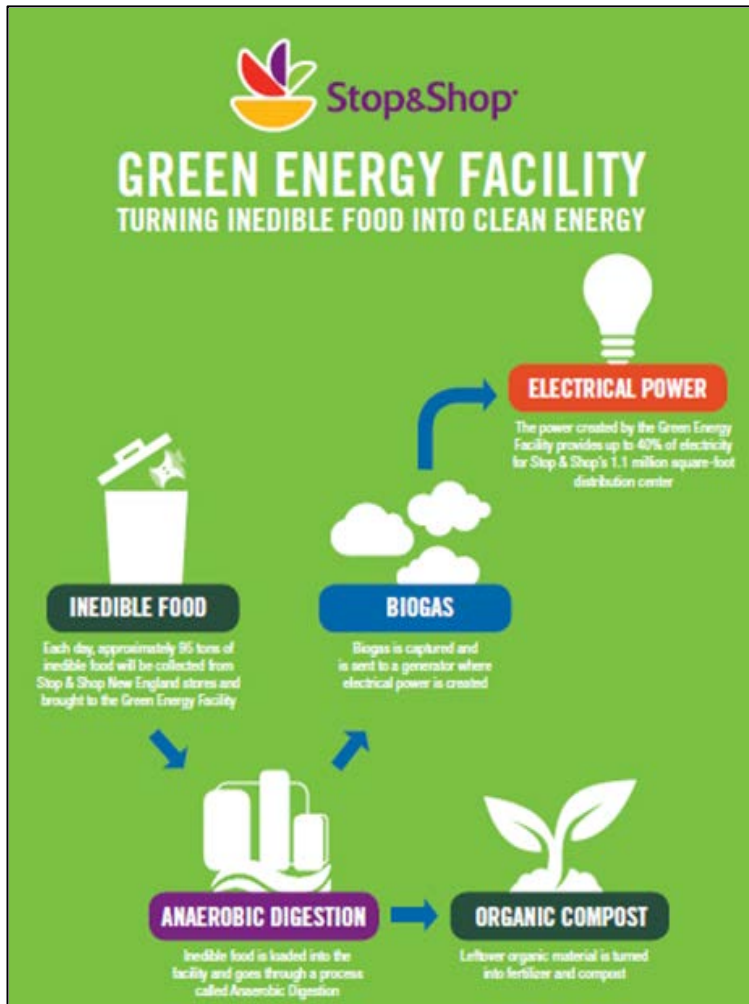
LEARN MORE, DO MORE [AT STOPANDSHOP.COM/COMMUNITY/CARE-FOR-THE-ENVIRONMENT](http://STOPANDSHOP.COM/COMMUNITY/CARE-FOR-THE-ENVIRONMENT)



**Retail Business
Services**

The Green Energy Facility







- No more depackaging
- No more carrying food waste outside
- No more dealing with weather & pests
- Safer overall process
- More food waste is processed!

1

Set up collection bin:

1. Position black pallet in desired location.
2. Stand up cardboard bin sleeve on pallet and pull out all sides to fit into the outer grooves.
3. Pull out the four yellow tabs on the underside of the pallet to lock the sleeve into place.
4. Use a banana liner to line the inside of the bin.
5. **NOTE: Pull out the liner so that it reaches down to the pallet around the outside of the bin (see picture).**



2

Collect food waste in bin:

1. Throw in packaged and unpackaged food that cannot be sold or donated.
2. **NOTE: Materials do not have to be depackaged before putting in bin. However, DO NOT add loose trash such as empty plastic bags or milk crates.**
3. Do not fill bin past the top! Leave at least 3 inches of space above the food.



3

Prepare bin for removal:

1. Pull all excess liner together above the food.
2. Close the liner by rolling or twisting together (**do not tie**). Make sure there are no contents left uncovered.
3. Start over with a new bin!



YES

- Produce (fruit, veggies, bagged salad, liquid in sealed containers)
- Dairy (yogurt, cottage cheese, cheese, eggs, milk/liquid in sealed containers)
- Deli (non-meat/seafood based salad, cheese)
- Bakery
- Floral cuts and trims (no soil)
- Grocery (packaged food, beverages in sealed containers)
- Frozen food

NO

- Items acceptable for food donation
- Rendering (meat, trim, bone, fish, oil, meat from Deli/Deli Prep)
- Liquid NOT in a sealed container
- Trash (bagged nor loose)
- Inedible, non-food items such as:
 - Soil, paper goods, detergent, bleach, batteries, crates, recyclable plastic and cardboard, empty bottles, cans, etc.
- Canned goods
- Metal, glass or any food in glass container



- Launched in April 2016
- 12,000 sq. ft. facility
- 208 Stop & Shop stores serviced
- Processes 95 – 130 tons food waste daily or 34,000 tons per year
- Can provide up to 40% of the 1.1 million sq. ft. DC's energy needs
- Can produce up to 1.25 megawatts of clean electricity



Ahold
Delhaize

Green Energy Facility Facts



- Over 52,000 tons processed since opening in 2016
- As of Feb. 2016 over 11,200,000 kWh produced
- This could run 1,040 U.S. homes for a year!



Questions
and Thank you!