

Environmental Justice Webinar Series for Tribes and Indigenous Peoples

# Traditional Knowledge – Tribal and Indigenous Peoples Experiences with Federal Agencies

1

October 19, 2021

Please note that this webinar will be **recorded** and posted on EPA's webpage for the webinar series.

# Presenters

- ▶ Valerie Hauser, Director, Office of Native American Affairs, Advisory Council on Historic Preservation
- ▶ John Brown, Tribal Historic Preservation Officer, Narragansett Indian Tribe
- ▶ Mike Durglo, Tribal Historic Preservation Department Head, Confederated Salish and Kootenai Tribes
- ▶ La Crivello, Ala Kahakai Trail Association, Hawai'i Island
- ▶ Danny Gogal, Tribal and Indigenous Peoples Program Manager, Office of Environmental Justice, U.S. EPA (Facilitator & Presenter)



- ▶ Valerie Hauser,  
Advisory Council on Historic  
Preservation

- ▶ John Brown,  
Tribal Historic Preservation Officer,  
Narragansett Indian Tribe

- Michael Durglo Jr,  
Tribal Historic Preservation  
Department Head,  
Confederated Salish and Kootenai  
Tribes



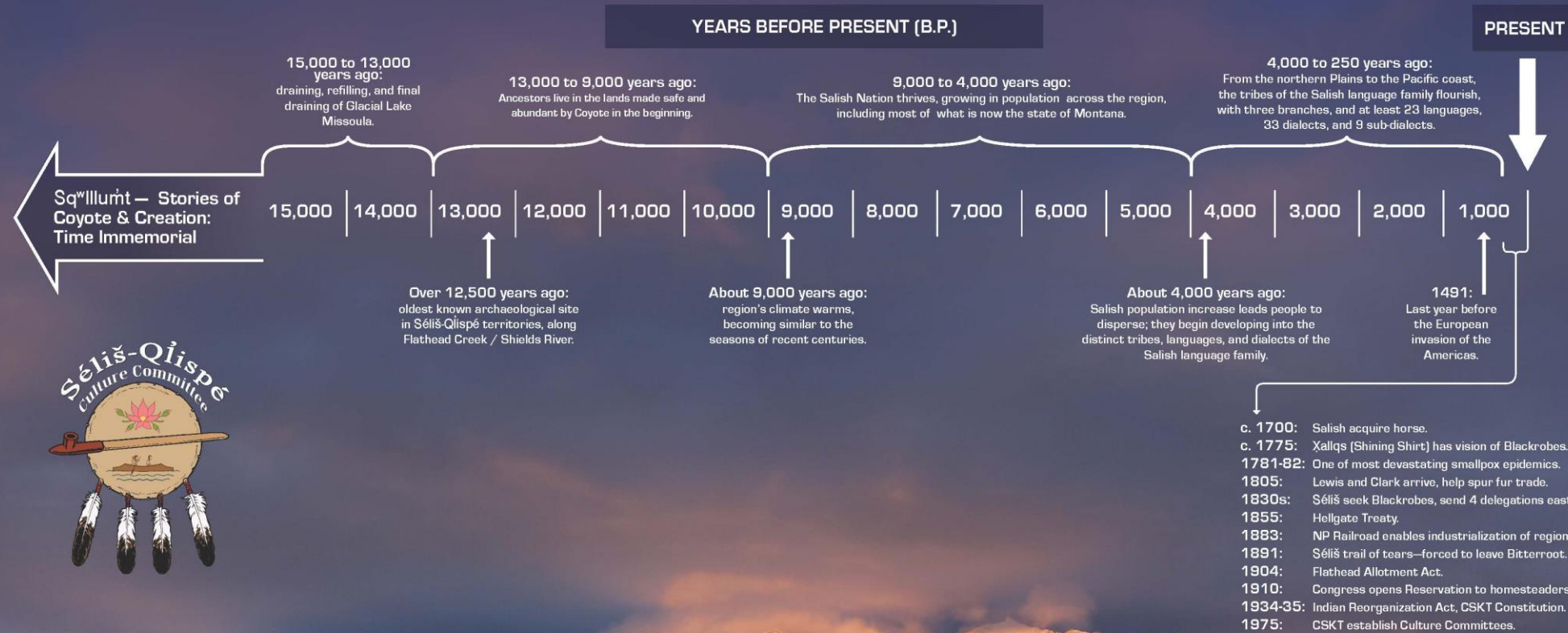


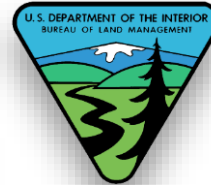
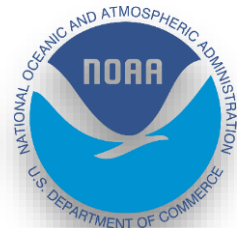
# Climate Change Strategic Plan

Confederated Salish and Kootenai Tribes of the Flathead Reservation

September 2013

# Séliš-Qłispé TIMELINE | since the last ice age

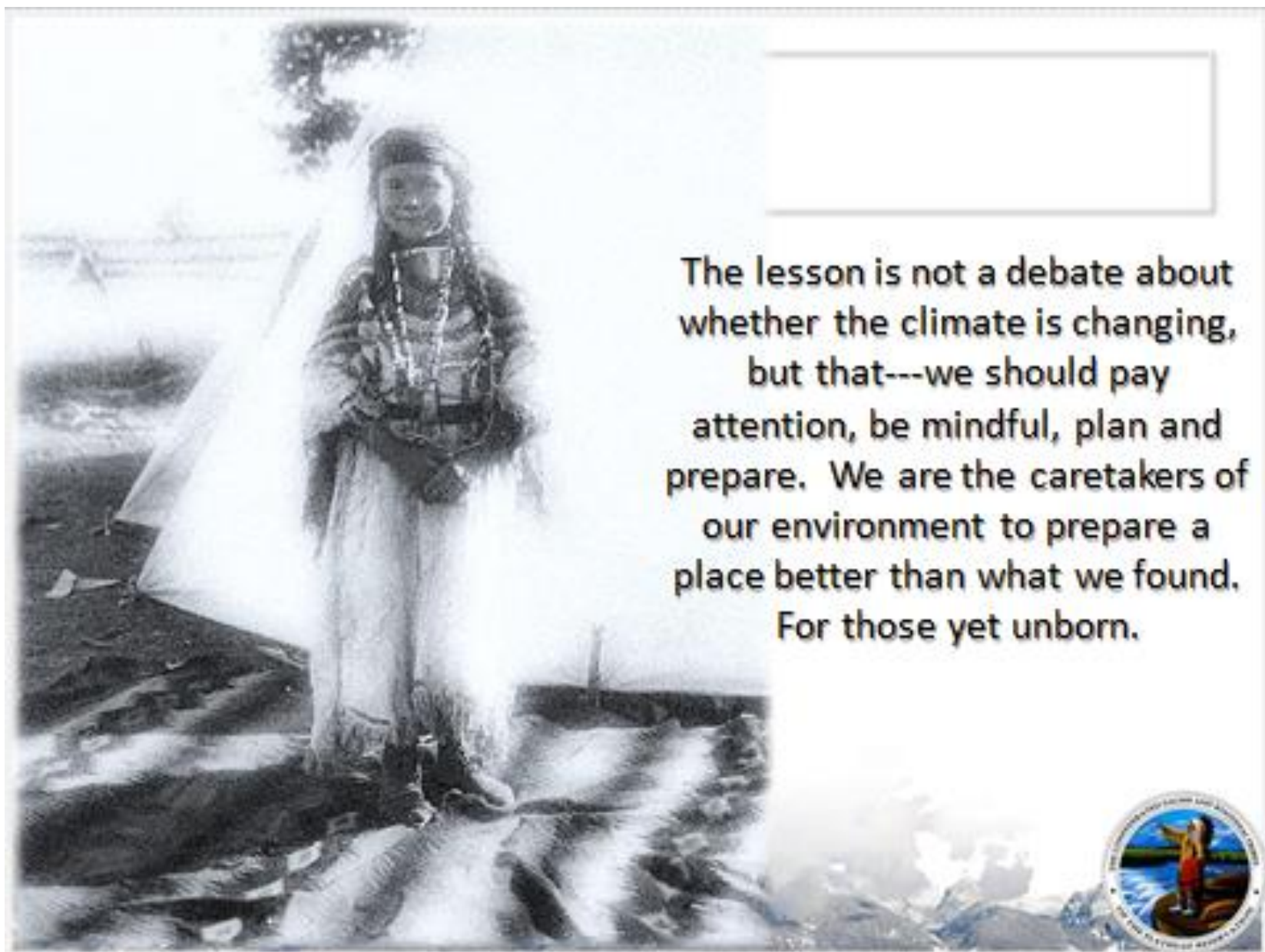












The lesson is not a debate about whether the climate is changing, but that---we should pay attention, be mindful, plan and prepare. We are the caretakers of our environment to prepare a place better than what we found. For those yet unborn.



- ▶ La Crivello, Coordinator,  
Ala Kahakai Trail Association,  
Hawai'i Island





# Ancient and Historic Trails in Hawaii



Ala Kahakai Trail Association





*“NĀNĀ I WAELE MUA I KE ALA, MAHOPE AKU MĀKOU, NĀ PŌKI’I.”  
HE [OR SHE] FIRST CLEARED THE PATH, AND THEN WE, THE YOUNGER ONES, FOLLOWED.*

# HAWAI'I TRAIL SYSTEMS

Terms to understand:

Ala -1. n. Path, road, trail. Cf. alaloa, alanui, alawai. Ala iki, narrow or small path. Ala i hiki ai, access, approach. Ala ho'i 'ole mai, a pathway on which there is no returning [death]. Ala a ka manu, a bird's trail [a life difficult to emulate]. Ala iki a kāhuna, the small path of priests [a difficult way of life]. (PPN hala.)

“Ala Kahakai” – lit. Path near the shore; coastal trail

Ala Nui Aupuni – lit. large government path; Government road systems “Old Government Road”

Ala Loa – lit. Long path

# ALA KAHAKAI TRAIL ASSOCIATION



## Mission

To support and guide:

A community-managed trail

Honoring nā poʻe o ka wā kahiko (the ancestors; elders)

Perpetuating for the generations to come

Maintain and exhibit nohona kūpuna (the essence, being, and lifestyle of our elders) with protocols and respect for Hawaiʻi

## Vision

Ancient and Historic trails as viable, appropriately used and well managed

Following the path of our ancestors

Creating hope for the future.

Provide a bridge of understanding, respect and balance for all to use, protect, learn from and appreciate.

# ALA KAHAKAI NATIONAL HISTORIC TRAIL

Network of ancient and historic trails and pathways that link them

175 mile corridor

'Upolu Point to the eastern boundary of Hawai'i Volcanoes National Park at Waha'ula Heiau

220 Ahupua'a

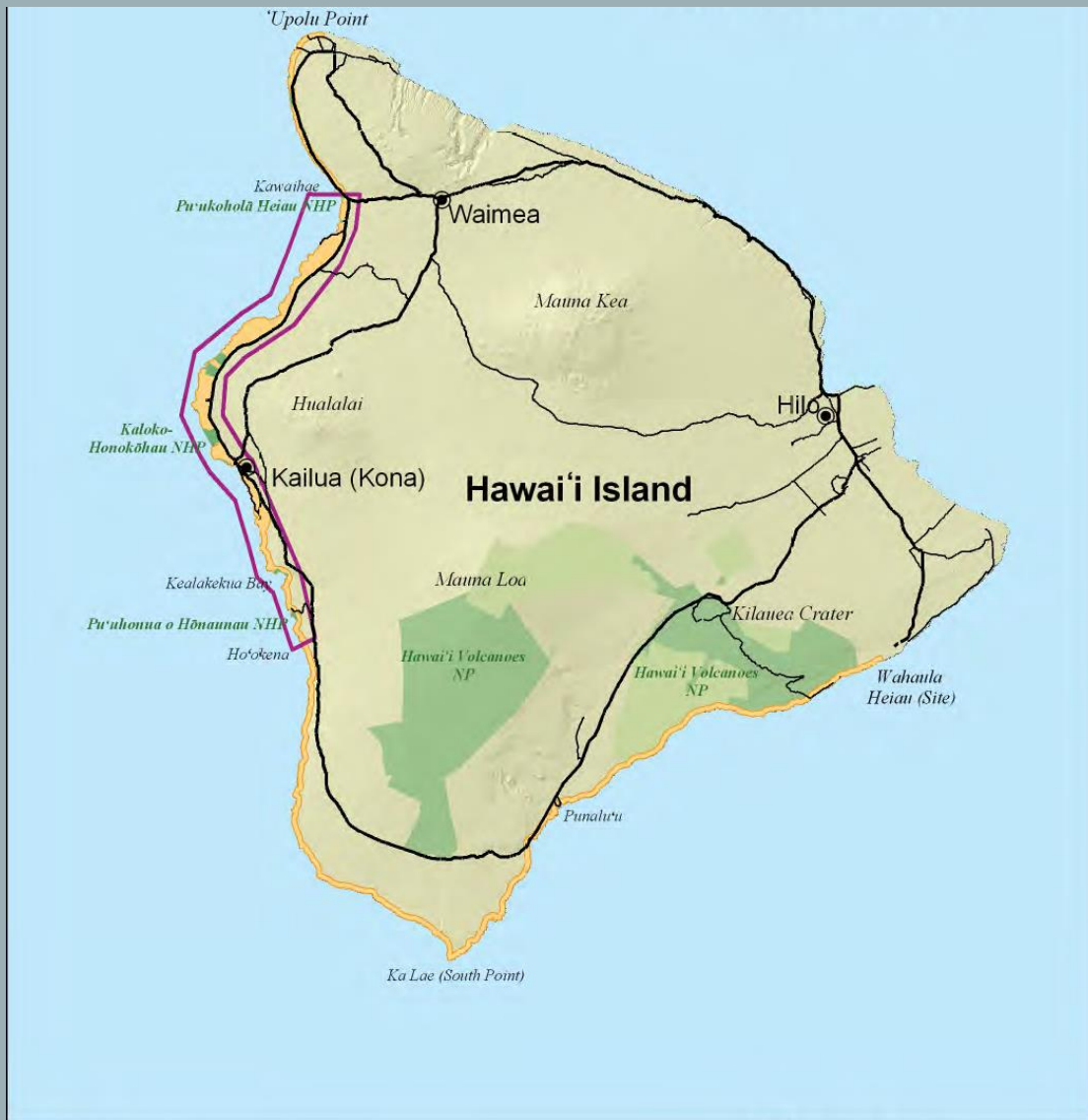
4 National parks

6 State parks

11 County parks

Cultural & historical sites



Protected resource areas



## Legend


 Ala Kahakai NHT Corridor

## Roads

 Primary  
 Secondary

 Parks

 Wilderness

 Priority Area for implementing the 15-year planning period





## TRAILS OVER TIME

Trails modernized and adapted over time:

Meandering trails "The path of least resistance"

Expedited Trails – “Highways”

Donkey & Horse Paths

Cart Paths

Roads

Modifications that accommodate our needs over time.

Trail modification due to natural events such as lava flows, tsunamis, and other occurrences.

The Hawaiian trail system was and will always remain dynamic.



THE HIGHWAYS  
ACT OF 1892

If a trail existed in  
1892, it is a public  
trail today and  
under jurisdiction  
of the State  
(HRS 264-1)

## THE HIGHWAYS ACT OF 1892

*“All roads, alleys, streets, ways, lanes, courts, places, trails and bridges in the Hawaiian Islands, whether now or hereafter opened, laid out or built by the Government, or by private parties, and dedicated or abandoned to the public as a highway, are hereby declared to be public highways.”*

— By order of the Queen’s government --

*Lili’uokalani*





## CHAPTER 264-1(B), HAWAII REVISED STATUTES (HRS)

Furthers the intent of the Highways Act

**All trails, and other nonvehicular rights-of-way in the State declared to be public rights-of-way by the Highways Act of 1892, or opened, laid out, or built by the government or otherwise created or vested as nonvehicular public rights of way at any time hereafter, or in the future, are declared to be public trails.**

A public trail is under the jurisdiction of the State Board of Land and Natural Resources - unless it was created by or dedicated to a particular county, in which case it shall be under the jurisdiction of that county.

All State trails once established shall continue until lawfully disposed of pursuant to Chapter 171, HRS.





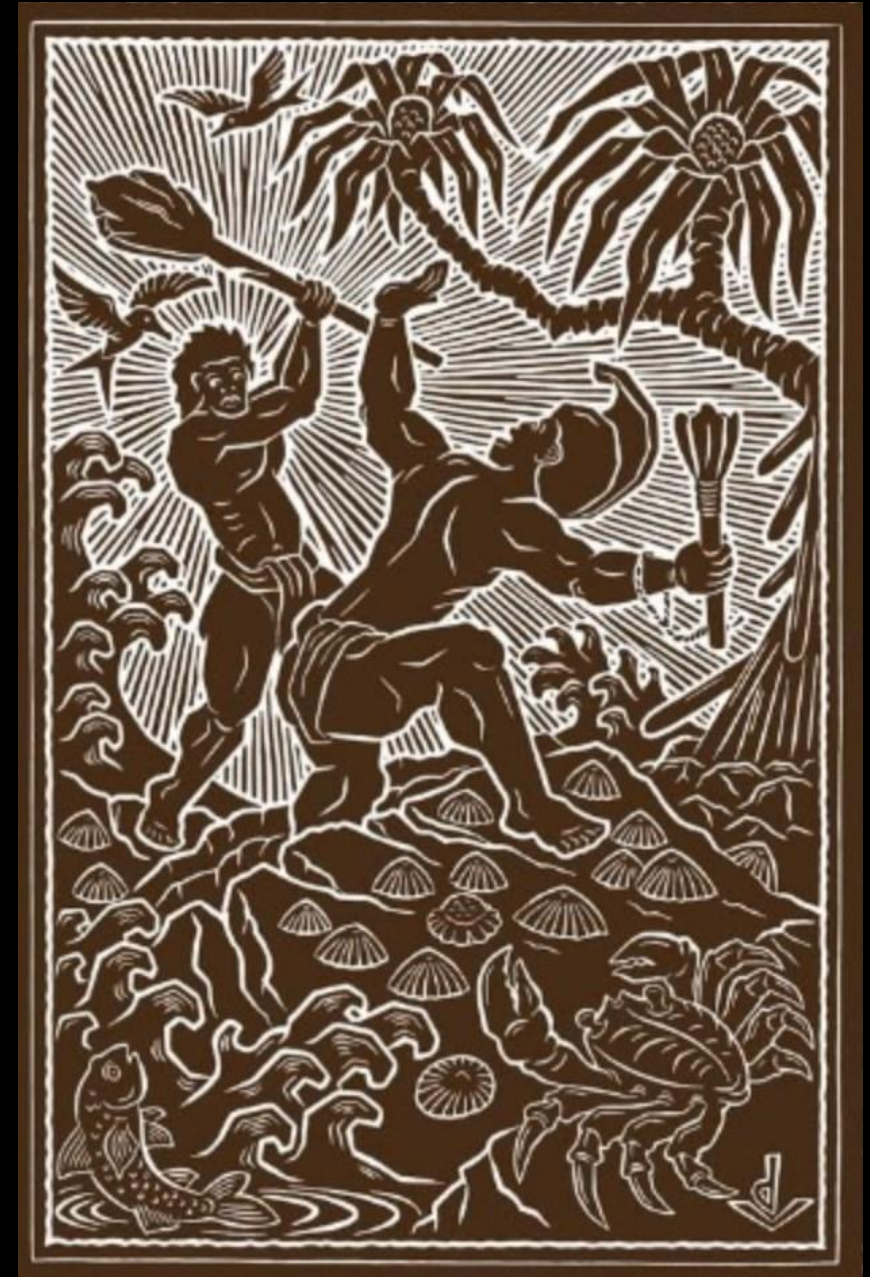
## Kānāwai o Māmalahoe

Enacted by Kamehameha Pai'ea (I)

### Protection for travelers along the trail.

Established the King's claim that all who traversed the trails were guaranteed safe passage and that no one woman or man should be harmed when traversing from place to place.

This encouraged use of the trails and the connectivity that such use would create.





# CONNECTIVITY

## Physical:

People, place, things  
Natural/Cultural Resources

## Spiritual/Emotional:

Cultural Practices/Traditions  
Natural Environment

## Social:

Federal & State  
Community groups  
Lineal/Cultural Descendants  
Generational



## RESOURCE PROTECTION

The Ala Kahakai NHT passes through and provides opportunities to protect significant natural areas and ecosystems with indigenous and endemic species along its route.

Anchialine pools

Caves

Endemic species habitat

Endangered and threatened species

Ecological zones

Lava forms and formations





## TRAIL INTERPRETATION

Comprised of cultural and natural resources:

- Archaeological resources
- Historic sites structures
- Cultural landscapes
- Wahi Pana (storied and sacred places)
- Geological landscapes
- Native plants or areas of native plant growth
- Pu'u
- Kipuka
- Water sources





COLLABORATIVE LANDSCAPE  
MANAGEMENT

Partnership(s) to manage shoreline trails and their associated cultural and natural resources

- County, state, federal agencies
- Private landowners and businesses
  - Community groups and lineal/cultural descendants

Protects and provides access to resources that together express the Native Hawaiian culture and way of life, past and present.





GOALS FOR THE FUTURE: Incorporating trail systems into natural resource protection strategies in partnership with government, non-government, private, and community-based entities.

Encourage communities to enhance and maintain positive generational relationships with the natural environment

- Education Outreach
- Available access
- Stewardship and succession

Mitigating human impacts on natural resources.

- Access to resources using what is already there.
- Active stewardship from the ground up.
- Emphasis on Place-based learning and Traditional Ecological Knowledge



SIMILAR TO ROADS  
TRAILS CONNECT US

Trails are a connection to  
people, places, and things in  
the past, present, and future.

Our Kupuna

Us

Our Mo'opuna

'Āina


Kai

Po'e Hawai'i

E ho'ohui nō kākou







“IN THE END WE WILL CONSERVE ONLY WHAT WE LOVE; WE WILL LOVE ONLY WHAT WE UNDERSTAND; AND WE WILL UNDERSTAND ONLY WHAT WE ARE TAUGHT.”  
(BABA DIOUM, 1968)

Ala Kahakai Trail Association, [www.alakahakaitrail.org](http://www.alakahakaitrail.org),

[@alakahakaitrailassociation](https://www.instagram.com/alakahakaitrailassociation)





# Questions and Answers

**Please complete the online Webinar  
Evaluation by clicking on this link:**

**<https://forms.gle/Hjf2Nt7DGn6pC7gD8>**

# Contact Information

Valerie Hauser, Director,  
Office of Native American  
Affairs, Advisory Council on  
Historic Preservation  
[vhauser@achp.gov](mailto:vhauser@achp.gov)

John Brown, Tribal Historic  
Preservation Officer,  
Narragansett Indian Tribe  
[tashtesook@aol.com](mailto:tashtesook@aol.com)

Michael Durglo Jr  
Tribal Historic Preservation  
Department Head  
Confederated Salish and  
Kootenai Tribes  
Pablo, MT  
[michael.durglo@cstk.org](mailto:michael.durglo@cstk.org)

La Crivello, Coordinator  
Ala Kahakai Trail Association,  
Hawai'i Island  
[crivello@alakahakaitrail.org](mailto:crivello@alakahakaitrail.org)

Danny Gogal, Tribal and  
Indigenous Peoples Program  
Manager, Office of  
Environmental Justice,  
USEPA  
[Gogal.Danny@epa.gov](mailto:Gogal.Danny@epa.gov)