



RCRA Corrective Action Cleanup + Productive Use

Economic Profile

GTE Operations Support Inc. Mountain View, California

BEFORE

Defense electronics manufacturer

AFTER



Light Rail
Station



Residential
Developments



Parks



Pest
Control
Business

CLEANUP OVERSEEN BY

EPA and California Department of Toxic
Substances Control

Starting in the 1960s, GTE Government Systems manufactured classified products for national defense activities at this site. GTE conducted environmental investigations in 1988 and found that its operations had contaminated groundwater with volatile organic compounds. Under oversight from EPA and the California Department of Toxic Substances Control, GTE treated the contamination to a level where natural processes can clean up the site.

After addressing the site's contamination, the city, the state and EPA worked together to ensure that the site was safe for residential and commercial redevelopment. The site has now been transformed into the communities of Whisman Station, California Station and Bedford Square, as well as the new residential and commercial development Radius. Two parks, a light rail station, and two small businesses are also at the site.



11

EMPLOYEES



\$1.5 million

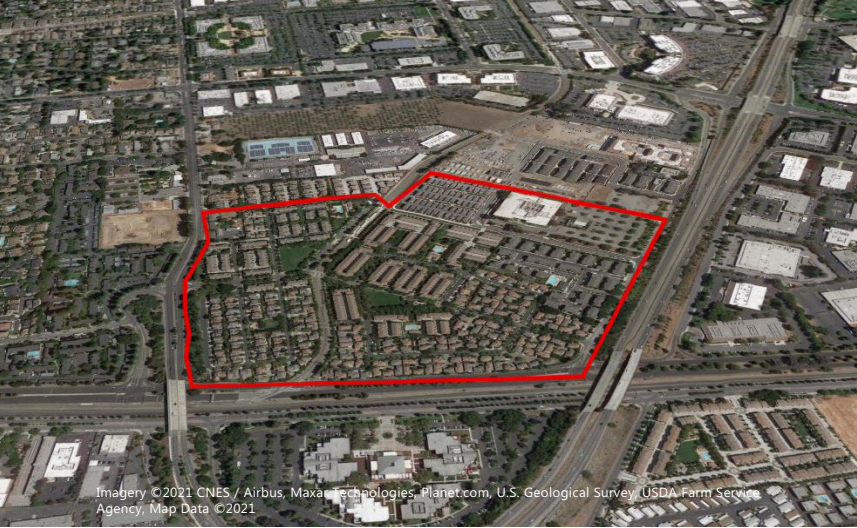
ANNUAL SALES



\$740,000

ANNUAL WAGES





THE AREA HAS TRULY TRANSFORMED AND GROWN INTO A THRIVING COMMUNITY WITH FAMILIES, GREEN SPACES AND PROMINENT COMPANIES FROM START-UPS TO SOME OF OUR BIGGEST TECH GIANTS.

Kimbra McCarthy, Mountain View City Manager

In 1997, the city of Mountain View approved construction of more than 500 townhomes and single-family residences centered around the newly built Whisman light rail station. EPA worked closely with the city to ensure that barriers were installed under all houses to keep underground vapors from entering the homes. Homes in the Whisman Station planned community sold quickly, with buyers even camping outside the sales office when the properties first went on the market.

Today, the award-winning community enjoys the light rail station as a convenient, low-carbon transportation option in the Silicon Valley area. In addition to supporting public transit, Whisman Station's compact, tree-lined neighborhood encourages residents to walk through and benefit from its two recreational parks. Residents also enjoy amenities such as pools and a spa at the Whisman Station clubhouse.

The site also supports a small termite control business, which employs 10 people and generates more than \$900,000 in annual revenue.

With the city of Mountain View leading the redevelopment effort, the former GTE Operations Support Inc. site has transformed into a dynamic, forward-looking community, providing much-needed housing opportunities in the Bay Area.



Whisman Station is a transit-oriented development that promotes a beneficial relationship between urban housing and public transportation.



The Valley Transportation Agency serves San Jose and the Silicon Valley suburbs. Riders can travel from Whisman Station to downtown Mountain View in less than 30 minutes.

[VTA light rail vehicle at Winchester station](#) by RickyCourtney/CC BY-SA 2.0.

