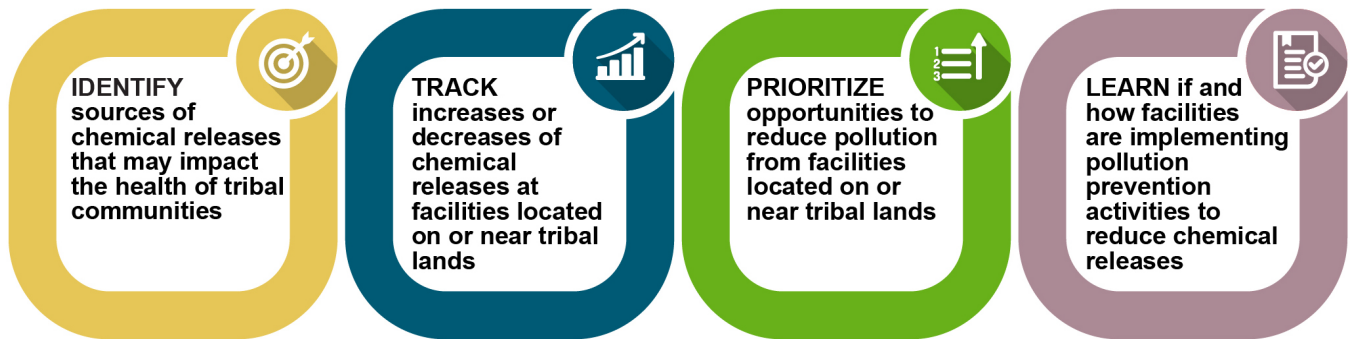




Toxics Release Inventory (TRI) for Tribal Communities

TRI data can help you learn about chemical releases, other waste management activities, and pollution prevention practices reported to EPA by nearby industrial and federal facilities.

How can tribal communities use TRI data?

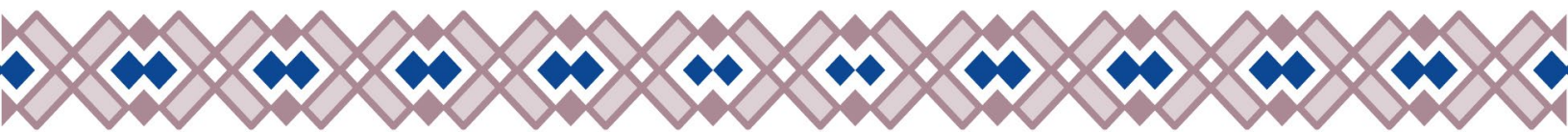
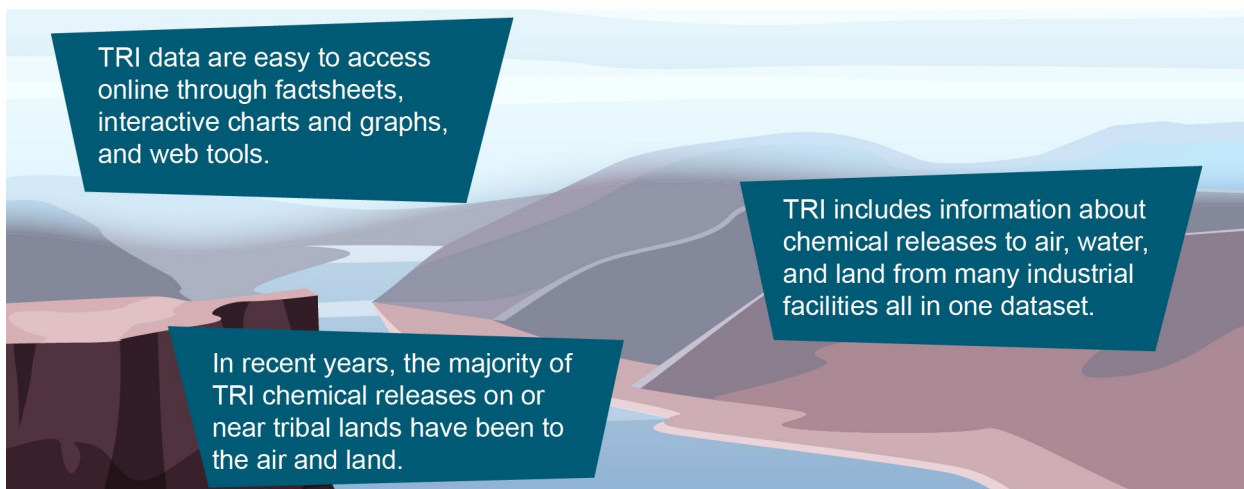


What can tribal communities learn from TRI data?

TRI is a publicly available database with web-based tools that allow communities to learn about on-site chemical releases to air, water, and land and off-site transfers. Facilities in 30 different industry sectors submit TRI reporting forms annually to EPA about the chemical waste they manage and otherwise release into the environment, as well as about the activities implemented to reduce waste generation.



Facilities that are located on the lands of federally recognized tribes are also required to submit a copy of their annual TRI reporting forms to a designated representative of each of the affected tribes.





Toxics Release Inventory (TRI) for Tribal Communities

How can tribal communities access TRI data?

The tribal lands search options in TRI Toxics Tracker provide interactive charts to easily access data about releases from TRI facilities on or within 10 miles of tribal lands. A widget is embedded on the TRI tribal webpage, www.epa.gov/tri/tribal, or can be accessed directly from TRI's homepage at www.epa.gov/tri. Find other tools for accessing and analyzing TRI data at www.epa.gov/tri/tri-data-and-tools.

For more detailed information on releases on or near tribal communities, start by filtering by one or more of the selections below

Select one or more industry sectors, such as food or wood product manufacturing, to view data and click

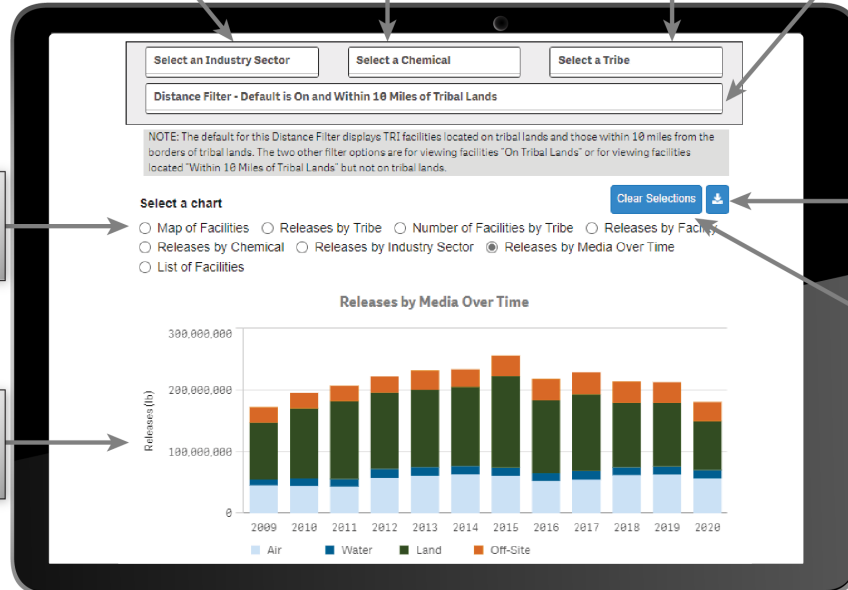
Select one or more chemicals that are reported to TRI and click

Select one or more federally recognized tribes and click

Select either "on tribal lands" or "within 10 miles of tribal lands" and click

This radio button menu lists eight options for viewing data based on your selection above

This chart updates based on the selections you make above



Download the raw data from the chart based on your selections

Click this button to reset your selections

Are tribal communities at risk from chemical releases?

While TRI data can be used to identify potential chemical hazards on or near tribal lands, these release data alone are not sufficient to determine exposure or to calculate potential risks to human health and the environment. To better understand potential long-term risks in your community, TRI data should be considered along with other information, such as the toxicity of the chemical(s), quantity released, route of exposure, and other information.

How can I learn more?

- Visit www.epa.gov/tri/tribal or www.epa.gov/tribal
- Email the TRI Program: tri.help@epa.gov
- Contact designated TRI Tribal Contacts: www.epa.gov/tri/tribal/contacts
- Find your EPA TRI Regional Coordinator: www.epa.gov/tri/contacts

