

Interagency Working Group on Coal and Power Plant Communities and Economic Revitalization



Jon Grosshans, US Environmental Protection Agency

grosshans.jon@epa.gov

January 2024

Coal & Power Plant Communities & Economic Revitalization



- The Interagency Working Group (IWG) was established by [Executive Order 14008](#), Sec. 218, on Jan. 27
- Initially identified **\$38 billion** in federal funding for energy communities... that number is now more than **\$900 billion**
- Two public reports outlining recommendations to catalyze economic activity



Getting More Funds, to More Places, More Quickly



Upgrade
Infrastructure



Clean Up
Environmental
Damage



Promote
Entrepreneurship



Support Workforce
Development

Two-Year Report to the President



Revitalizing Energy Communities Two-Year Report to the President



APRIL 2023



ACTIVITIES THUS FAR

9,000⁺

STAKEHOLDERS
ENGAGED

25⁺

IN-PERSON AND
VIRTUAL WORKSHOPS

11⁺

COMMUNITIES
REACHED

3

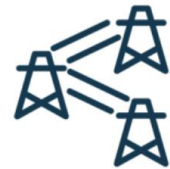
RAPID RESPONSE
TEAMS

CORE INFRASTRUCTURE INVESTMENTS



TRANSPORTATION

\$152B



TRANSMISSION

\$16.5B



EV CHARGING
INFRASTRUCTURE

\$7.5B



BROADBAND

\$65B



WATER
INFRASTRUCTURE

\$50B

Funding Opportunities in the Clearinghouse



\$532B+

Value of Open/Planned
Competitive Funding

\$431B+

Value of Open/Planned
Formula Funding

171

Open/Planned
Opportunities

48

Opportunities w/
no cost share

22

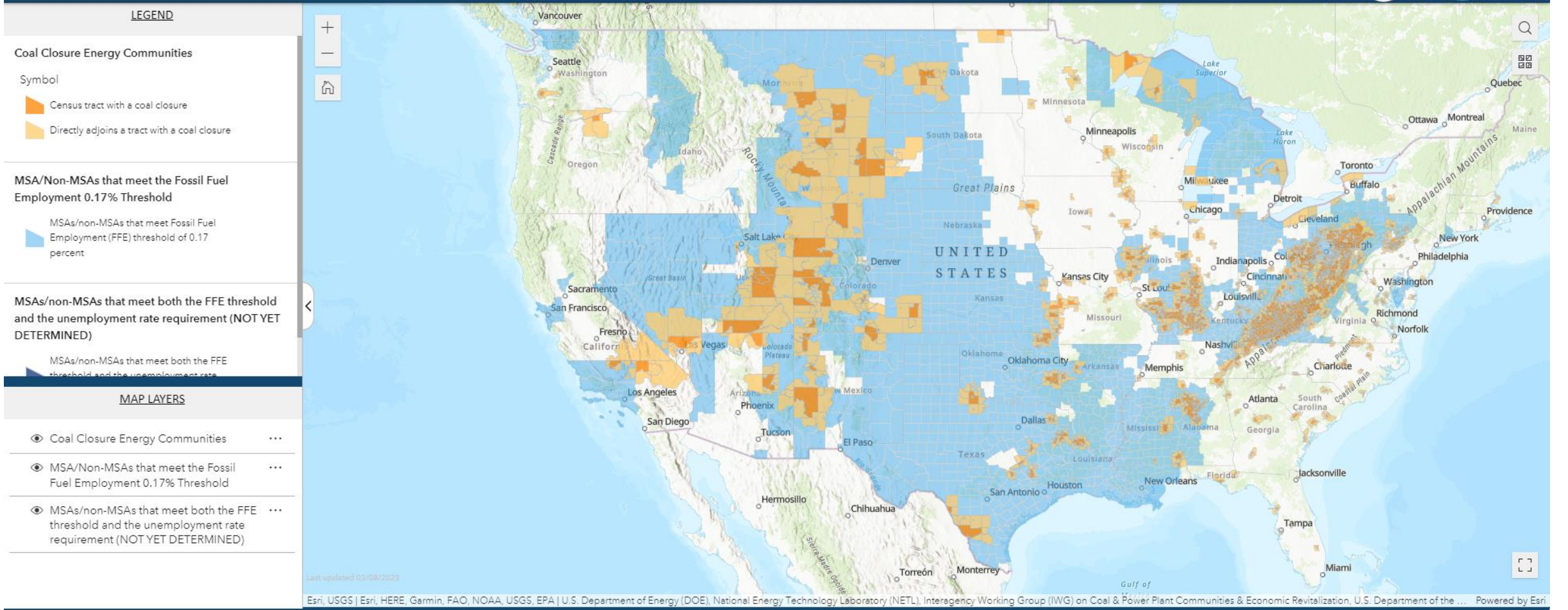
IRA tax credits

<https://energycommunities.gov/funding/>

Energy Community Map for Bonus Tax Credit



Energy Community Tax Credit Bonus



Energy Community Map for Bonus Tax Credit





Energy Community Tax Credit Bonus




LEGEND

Coal Closure Energy Communities


Symbol

-  Census tract with a coal closure
-  Directly adjoins a tract with a coal closure

MSA/Non-MSAs that meet the Fossil Fuel Employment 0.17% Threshold

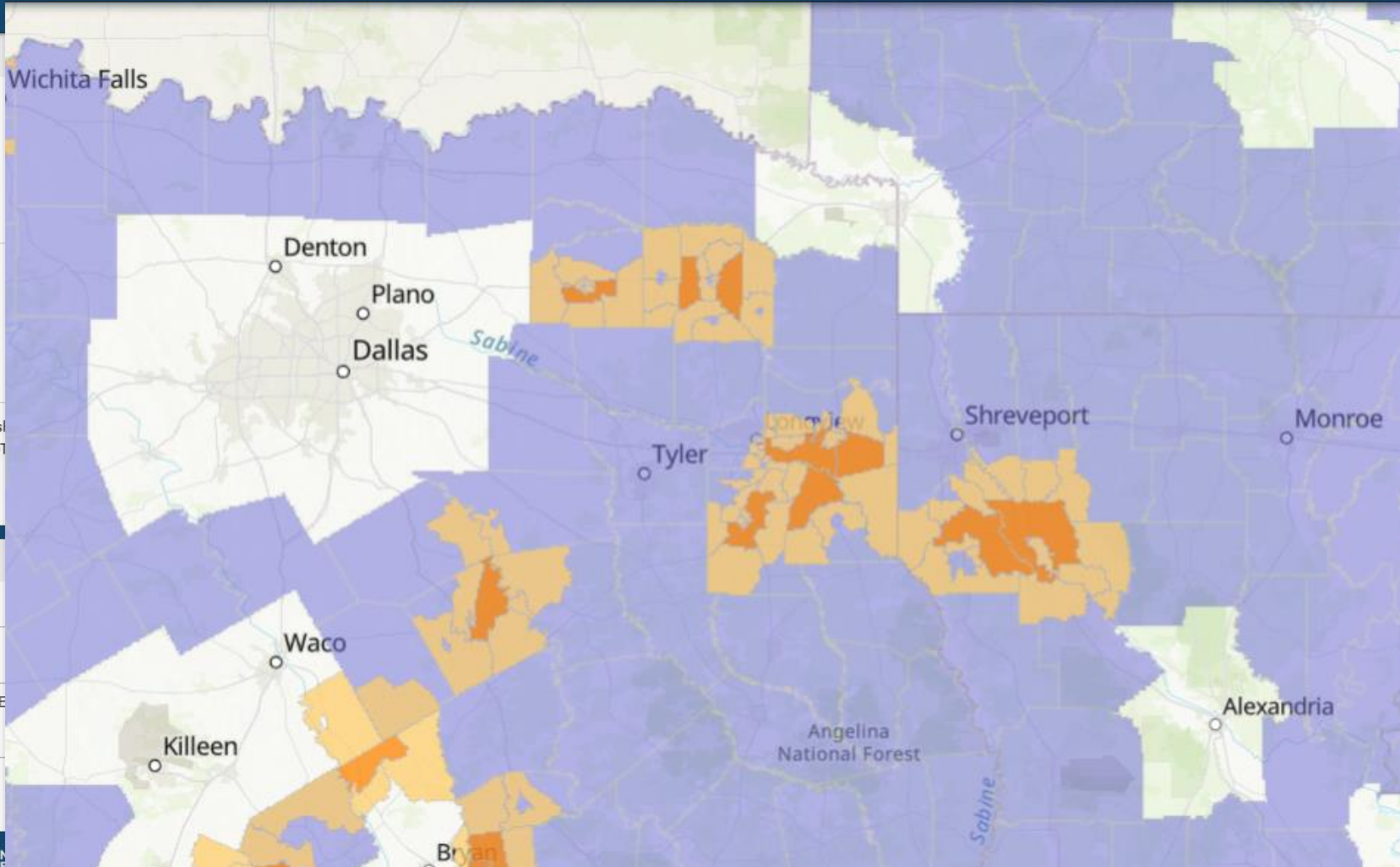
-  MSAs/non-MSAs that meet Fossil Fuel Employment (FFE) threshold of 0.17 percent

MSAs/non-MSAs that meet both the FFE threshold and the unemployment rate requirement (NOT DETERMINED)

-  MSAs/non-MSAs that meet both the FFE threshold and the unemployment rate requirement

MAP LAYERS

- Coal Closure Energy Communities
- MSA/Non-MSAs that meet the Fossil Fuel Employment 0.17% Threshold
- MSAs/non-MSAs that meet both the FFE threshold and the unemployment rate requirement (NOT YET DETERMINED)



Commons Attribution 4.0 License

ization, U.S. Department of the ... Powered by Esri
[Disclaimer](#)
[Energy Data eXchange](#)
 National Energy Technology Laboratory
 U.S. Department of Energy

The Inflation Reduction Act (IRA)



Tax Credits & Loan Guarantees

IRA provides **targeted investments** in energy communities.



\$250 Billion in Authority for Redeveloping & Repurposing



Bonus Tax Credits for Clean Energy Projects in Energy Communities



\$4 Billion Clean Energy Manufacturing Tax Credits for Energy Communities

Workers/Community/EJ

IRA supports **energy workers, and their families**, who built this country.



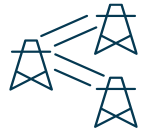
Black Lung Disability Trust Fund Reinstated



\$27 Billion Green House Gas Reduction Fund

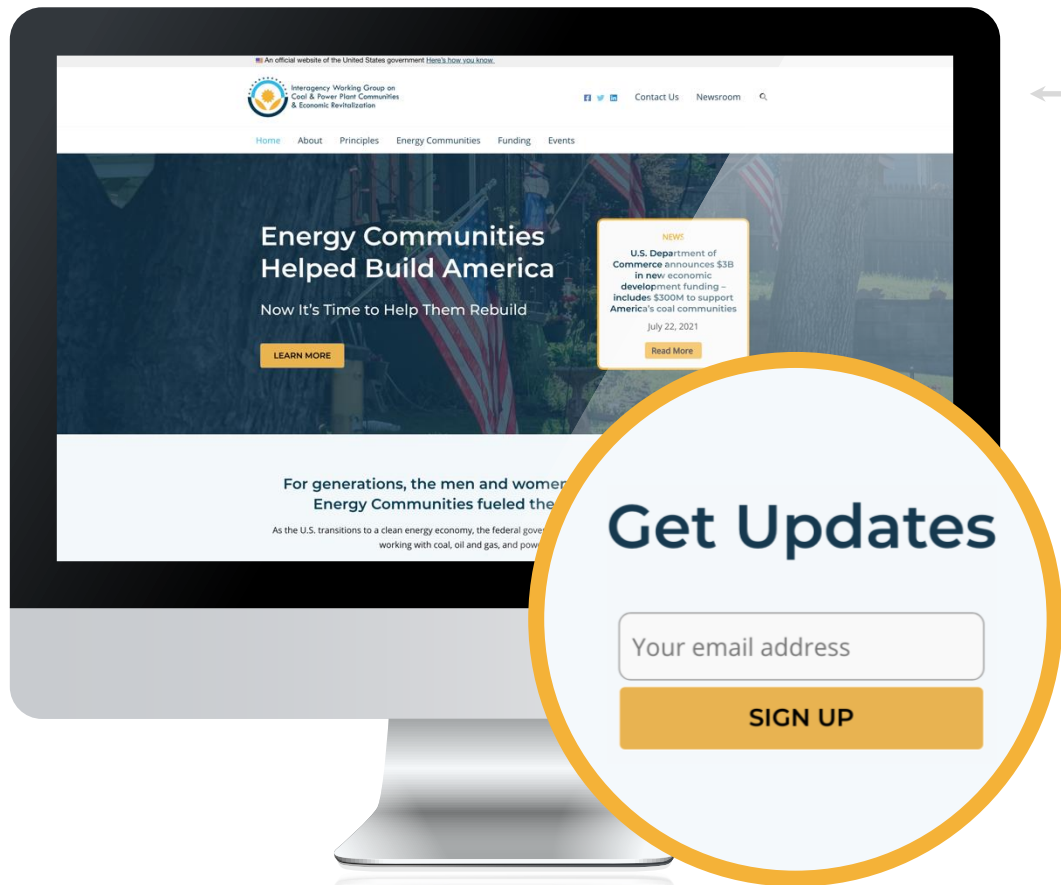


\$3 Billion for Environment and Climate Justice



\$145 Million Tribal Electrification

Sharing Information: IWG Website & Social Media



energycommunities.gov



@EnergyComm_US



@EnergyCommunitiesUS



@energycommunitiesus